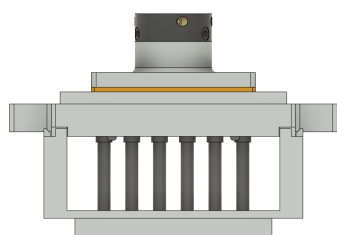
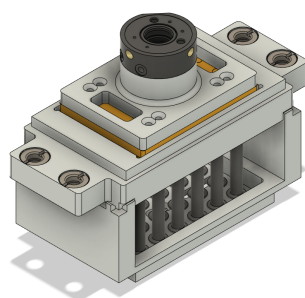


## KS Magnetic Rod Tools

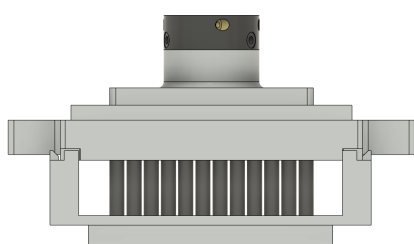
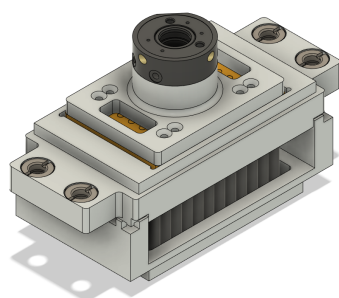
The KS Magnetic Rod Tools provide an automated solution for paramagnetic bead-based separation in scientific assays, including DNA and RNA extraction, PCR purification, size selection, and cleanup assays. This solution offers faster processing and lower sample loss compared to other bead cleanup methods. Additionally, the Magnetic Rod Tools provide versatility and can be easily swapped with other MCPA tools, such as pipet tools and blowdown tools. This allows for versatile liquid handling during plate preparation, air blowing during ethanol drying steps, and processing larger volumes before splitting. As a result each tool can be standalone or integrateable.

### 24KS Magnetic Rod Tool\*



P/N:	MCPA-MAG-ROD-24
MCPA	Yes
Compatible Instruments	700, 730i, 900, 1200, 1800
Compatible Labware	MKS-24-TCS, 24 SBS labware
Processing Volume Range	50µL - 15000µL (24 deepwell)
Use cases	For RNA, DNA extraction protocols

### 96KS Magnetic Rod Tool\*

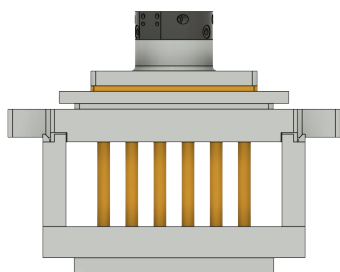
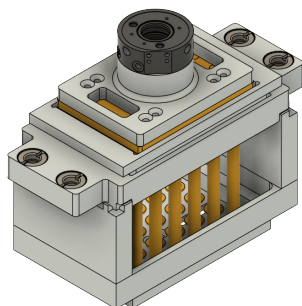


P/N:	MCPA-MAG-ROD-96
MCPA	Yes
Compatible Instruments	700, 730i, 900, 1200, 1800
Compatible Labware	MKS-96-TCS, 96 SBS labware
Processing Volume Range	20µL - 2200µL (96 deepwell)
Use cases	RNA and DNA extraction. Bead clean up in library prep

\*

# KS Magnetic Rod Tools

## 24KS XL Magnetic Rod Tool\*



P/N: MCPA-MAG-ROD-24-XL	
MCPA	Yes
Compatible Instruments	730i, 900, 1200, 1800
Compatible Labware	MKS-24-TCS, E-Z Select Plate
Processing Volume Range	100µL - 25000µL (24 deepwell)
Use cases	large volume 8-10mL cfDNA, midi, and maxi protocols

\*Magnetic Rod Tool pictured with Park Station, P/N: 11000016